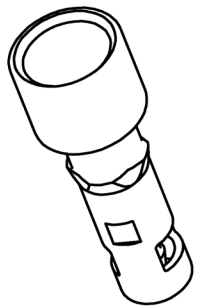
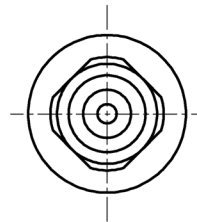
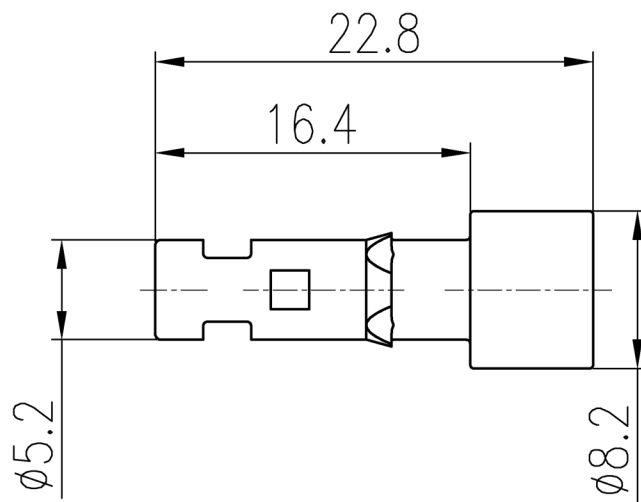


A

B

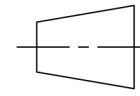


技术参数:

- 材料: 聚甲醛
- 颜色: 黑色
- 软管内径: 1.6mm/ 1/16"
- 工作压力: 最大 8 bar/116 psi
- 密封圈材料: 氟橡胶
- 闭锁阀: 聚丙烯
- 可插拔次数: >500

Technical specification:

- Material: delrin acetal
- Colour: black
- Tube termination:
Internal diameter(ID): 1.6mm/ 1/16"
- Working pressure: up to 8 bar/116 psi
- Sealing material: FPM
- Shut off valve material: Polypropylen
- Mating cycles: >500



订货号 Order No.

版本
REV

重量
weight

比例
Scale

产品代号 Part Code

V1.0

PCFS-1.6



SMICO

浙江思美克电气科技有限公司

ZHEJIANG SMICO ELECTRICAL TECHNOLOGY CO.,LTD